

OBJECTION #9: IT NEVER ENDS WHERE IT SHOULD

*Supera deployment
can be predictable if
you prep the vessel
well and use the right
technique*

23 p.d Savaime išsiplečiantys didelės radialinės jėgos stentai pakinklio arterijoms

23 p.d Savaime išsiplečiantys didelės radialinės jėgos stentai pakinklio arterijoms

VESSEL SIZING

- Ensure adequate vessel preparation and correct sizing

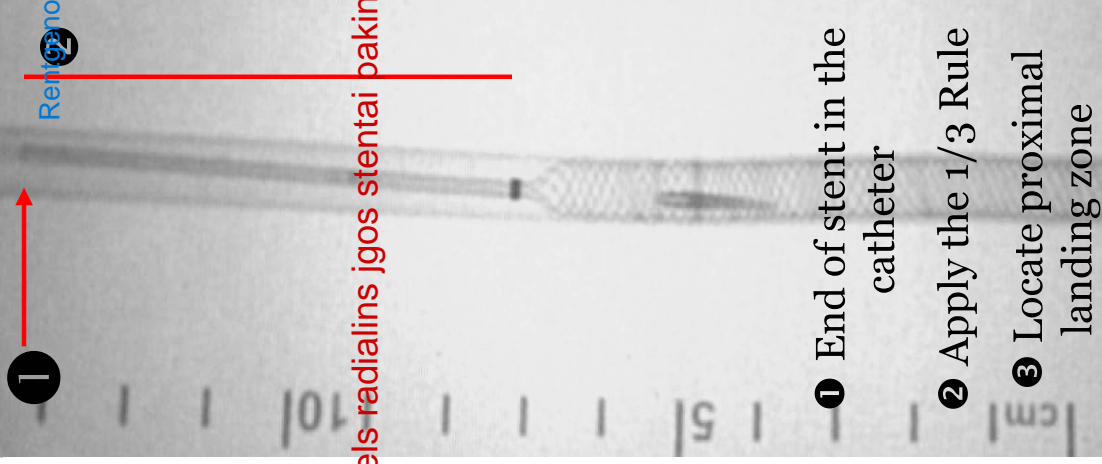
TECHNIQUE

- Slow, short thumb slides
- Don't pull catheter

1/3 RULE

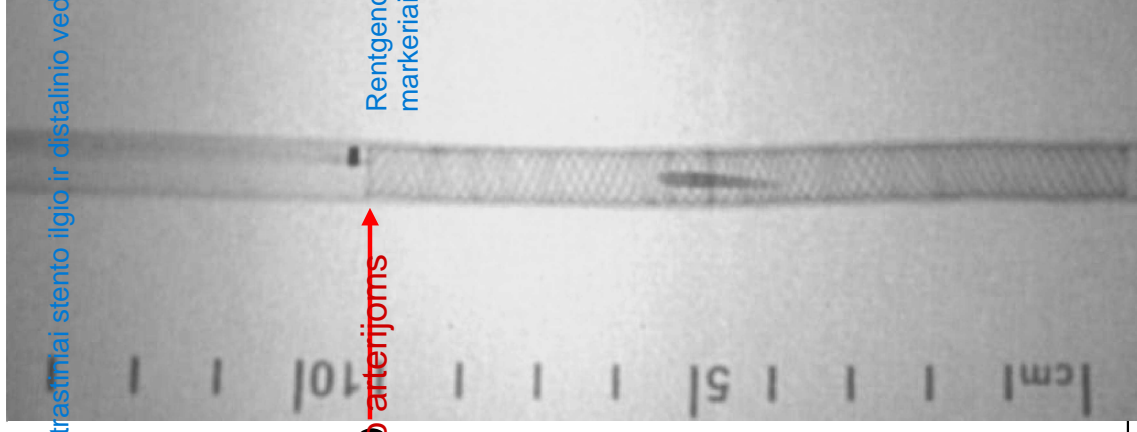
- Use 1/3 rule if trying to determine landing

Where will it end?



- ① End of stent in the catheter
- ② Apply the 1/3 Rule
- ③ Locate proximal landing zone

Confirm landing zone



Perfect deployment!

